



BRONZE  
**OEM Partner**

---

**ROCKWELL AUTOMATION**



expanding **human possibility**®



**CISCO's Users Group Event 2022**  
**Rockwell Automation • PLC Partner**

Diana Hamilton • Reagan Matthews • 09.14.22



**Rockwell  
Automation**

# Introduction



## **Diana Hamilton**

**OEM Account Manager, supporting CiSCO CEMS**

I am the Denver Territory OEM Account Manager for Custom Instrumentation Services, Co.

I am responsible for supporting the partnership relationship with Rockwell Automation and I work with the local distributor, Rexel, to ensure ideal outcomes for the CiSCO CEMS team.



**Rockwell  
Automation**

Tell me about  
Rockwell Automation

AT A GLANCE



# Rockwell Automation

**Our strategy is to bring The Connected Enterprise to life.**

We integrate control and information across the enterprise to help industrial companies and their people be more productive and sustainable.

**\$7.0B**

FISCAL 2021 SALES

**24,500+**

EMPLOYEES

**100+**

COUNTRIES

ABOVE-MARKET GROWTH | PRODUCTIVITY | INTELLECTUAL CAPITAL >>> VALUE CREATION



# 100 YEARS of partnership



**PartnerNetwork™**

BY ROCKWELL AUTOMATION

**1903**

Lynde Bradley and  
Dr. Stanton Allen form  
Allen-Bradley Company

**1958**

Distributor APR  
concept realized

**1924**

1st Appointed Distributor  
- Oakes Electric

**1992**

1st Automation Fair® Event

Enabled™  
Program launched

1st Encompass  
Partner Conference

**2000**

Solution Partner  
Program launched

OEM  
Program  
launched

Strategic Alliance  
Program  
launched

**2009**

PartnerNetwork™ established,  
1st PartnerNetwork Conference

Recognized System  
Integrator & Equipment  
Builder programs launched

**2018**

Rockwell Automation  
launches new brand

Digital Partner  
Program Launched

**2020**

Launched New Distributor  
Segmentation Model

**2021**

Introduced New  
System Integrator and  
Technology Partner  
Programs

# Why partner with Rockwell Automation?



**Products**



**Services & Support**



**Technology Leader**



A large, curved banner for the Automation Fair event. The banner has a white top section with the text "Automation Fair®" in black. Below this is an orange section with the Rockwell Automation logo (a stylized "RA" in a hexagon) and the tagline "expanding human possibility™" in white. The banner is set against a dark background with some lights visible. In the foreground, the backs of several people's heads are visible, suggesting they are looking at the banner.

# Automation Fair®

 **Rockwell  
Automation**  
expanding human possibility™

## Biggest event of the year

**SAVE THE DATE • NOVEMBER 16-17**

The 2022 Automation Fair® event will feature an immersive experience showcasing the value and power of our IT/OT expertise. This two-day event brings together industrial automation experts and leaders to guide you through the latest breakthroughs, strategies, and proven best practices, and to work with you on how to enhance your operation and achieve greater results.

### **Rockwell Automation. Results Achieved.**

This year's Automation Fair event will feature everything you love and more - from engaging keynote presentations, interactive training and learning, industry-centric discussions, and our signature Expo featuring the latest innovations from Rockwell Automation and members of our PartnerNetwork™ program.

[Learn more about the event >](#)



# Thank you



[www.rockwellautomation.com](http://www.rockwellautomation.com)



**Rockwell  
Automation**

expanding human possibility®



---

expanding **human possibility**®

---



# Controller Modernization



# Reagan Matthews

**Technology Consultant, Software & Control**  
Denver, CO

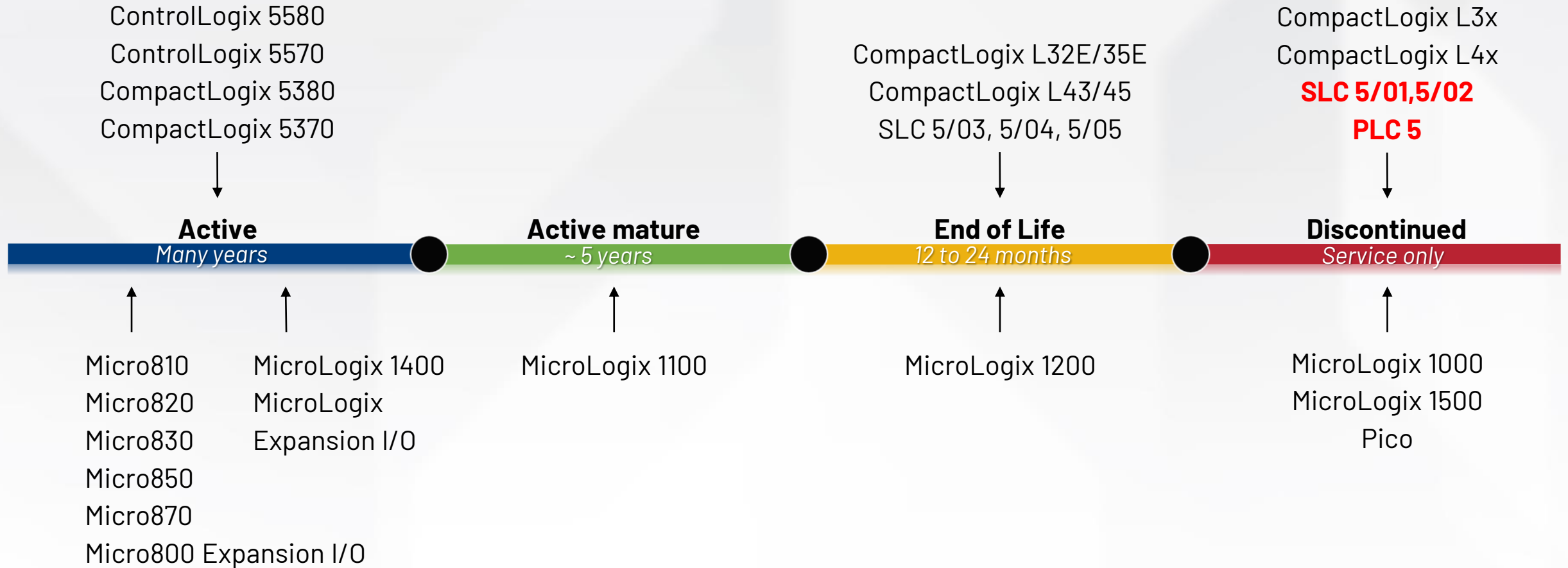
Supporting customers in Colorado, Nebraska, N & S Dakota, Wyoming, & Montana with technical domain expertise.

Ask me questions about controllers, HMIs, design software, and more. I'm here to support CiSCO CEMS and their customer base.





# Controller Product Lifecycle Status



# Modern Controller Portfolio

## Micro Control Platform

### MicroLogix & Micro800® Controllers

- Low acquisition cost
- Easy connectivity
- Simple programming tools
- Ideal for standalone machines



## Complex Systems

### ControlLogix™ Controller

## Standard Machines

### CompactLogix™ Controller

- Multiple control disciplines
- Flexible and scalable
- Real-time information-enabled
- Standard, unmodified Ethernet
- One common integrated design environment
- Local and distributed I/O options



## Process Safety

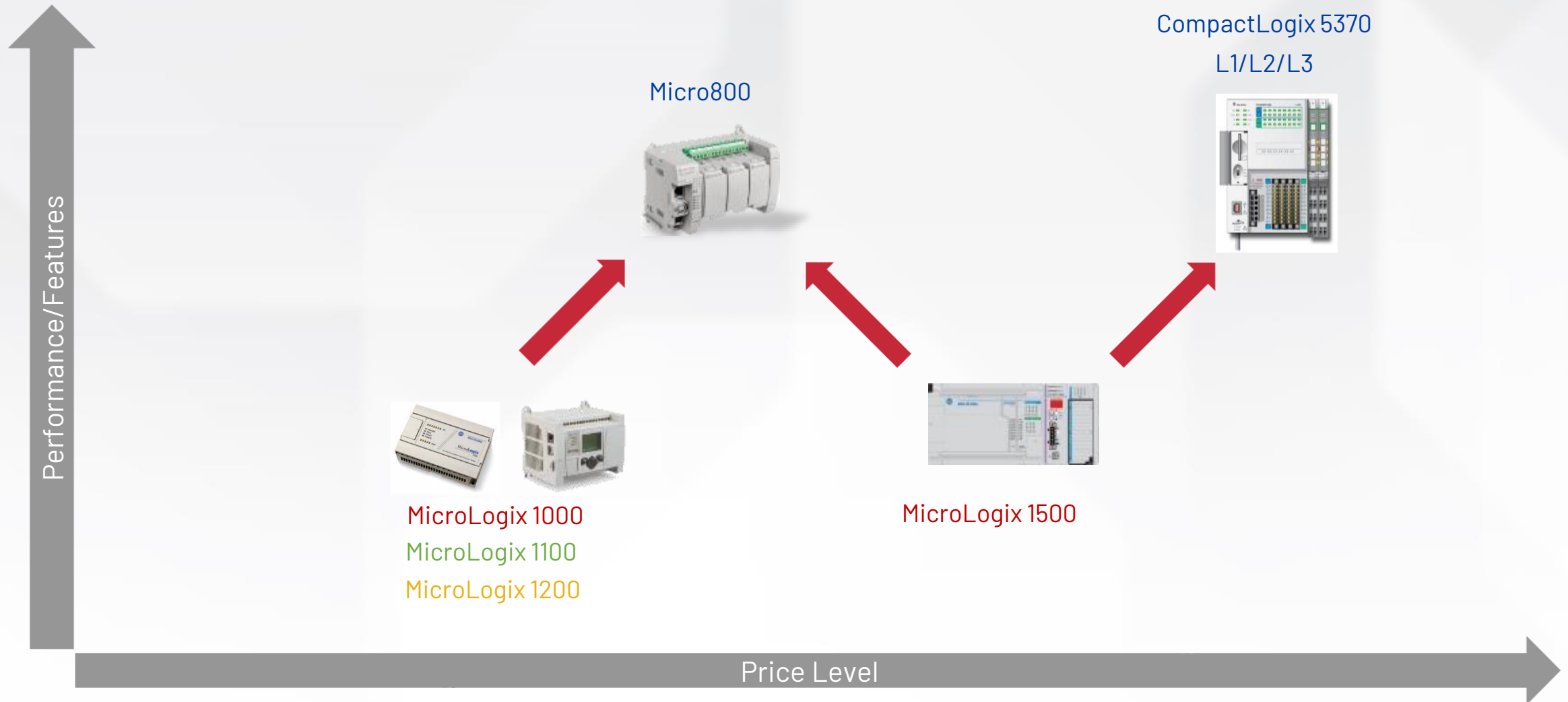
### AADvance/Trusted®

- Scalable redundancy for fault tolerance
- Provides safety and availability requirements
- Distributed processing power



# Modernize your Machine

MicroLogix → Micro800 / CompactLogix



# Modernize your Machine

SLC500 & CMX L3x/L4x → CMX 5380

CompactLogix5380



CompactLogix L3x / L4x  
CompactLogix L32E/L32EK/L35E/L43/L45



SLC 5/01,5/02  
SLC 5/03, 5/04, 5/05

Performance/Features

Price Level



# Modernize your Machine

SLC500 & CMX L3x/L4x → CMX 5380

ControlLogix 5580

ControlLogix 5570



ControlLogix 5560



PLC 5

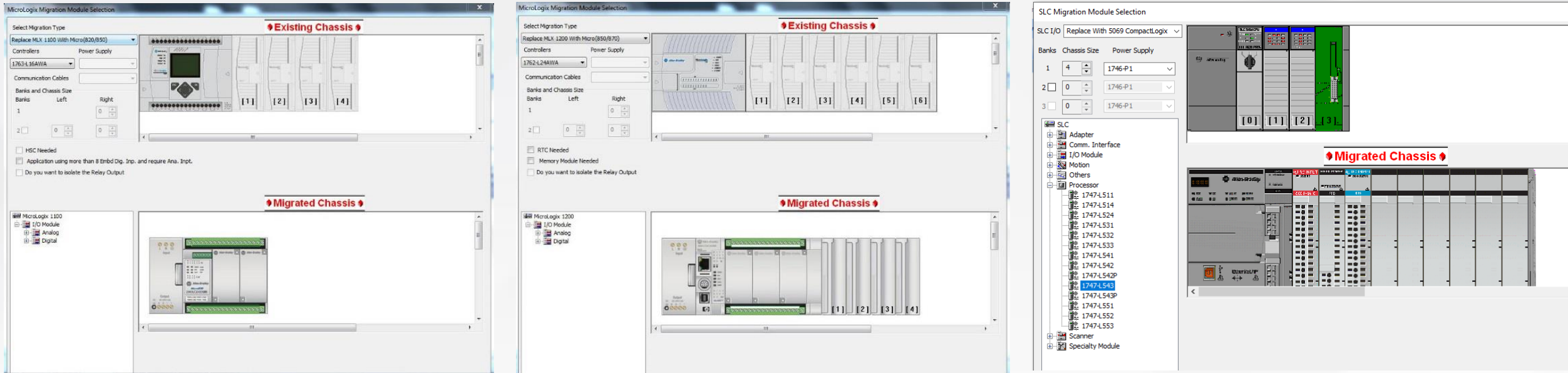
Performance/Features

Price Level

# Modernization Resources

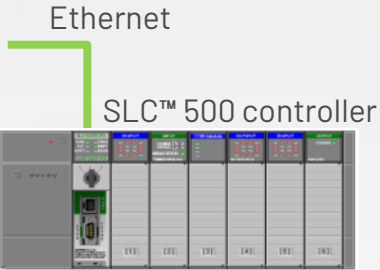


# Modernization Tools – Integrated Architecture Builder (IAB)

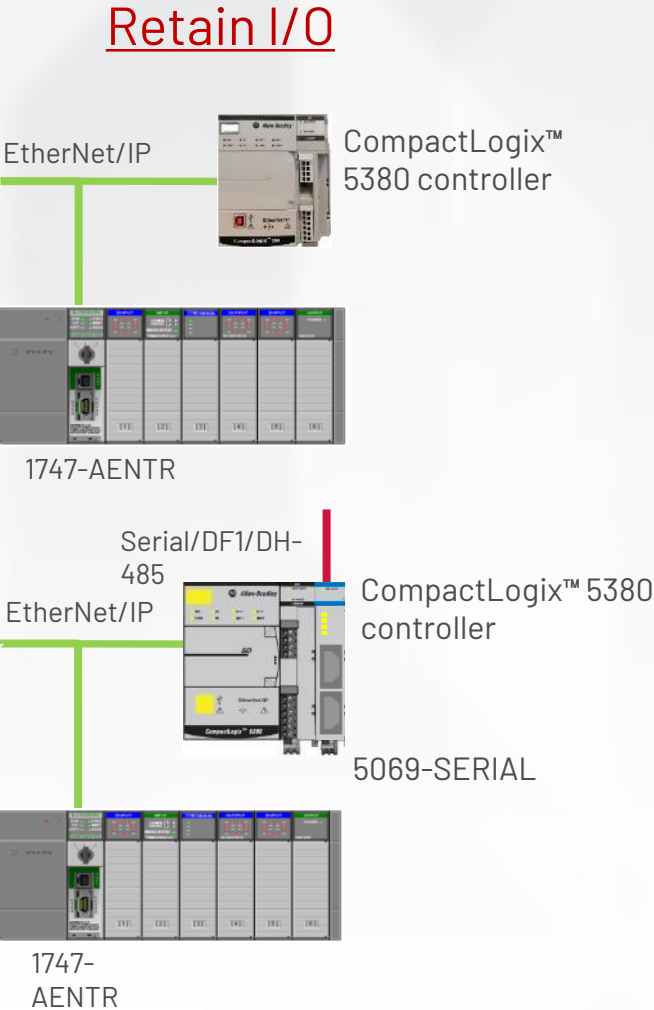
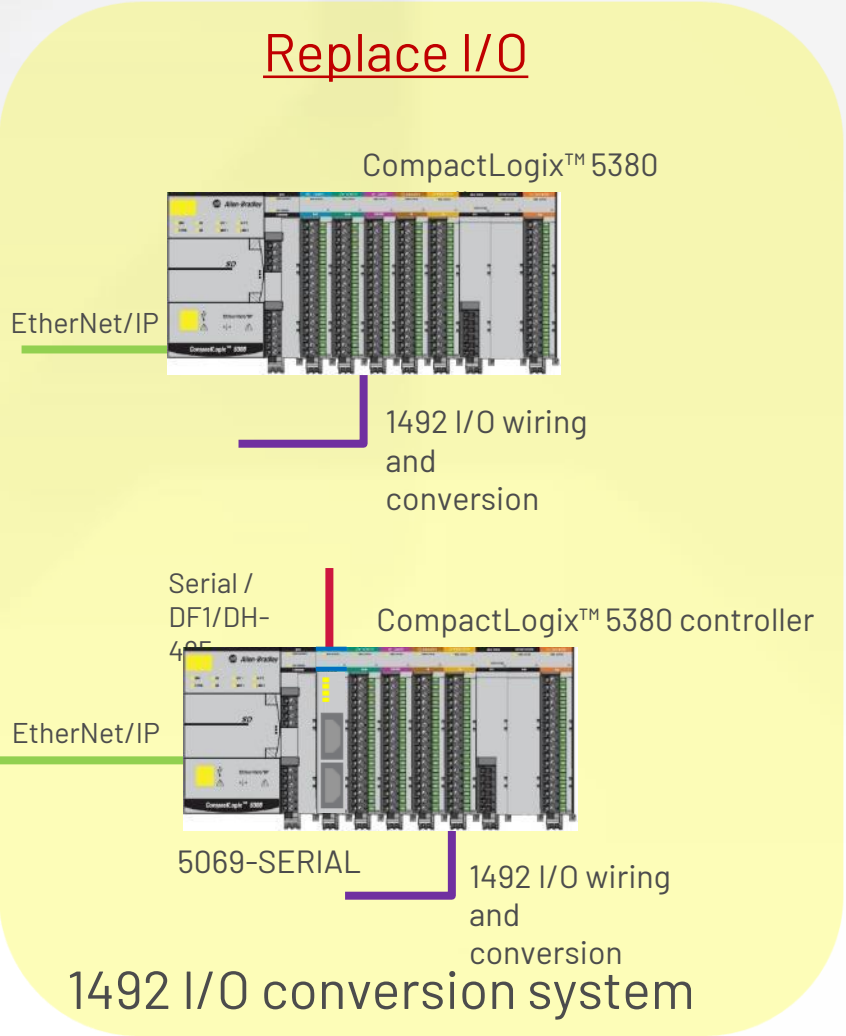


- IAB includes Migration Wizard created for MicroLogix, SLC, and PLC5
- Helps you accurately convert an existing chassis to the equivalent counterpart
- Create equivalent Bill of Material to ease migration

# SLC™ 500 to CompactLogix™ 5380 control system modernization



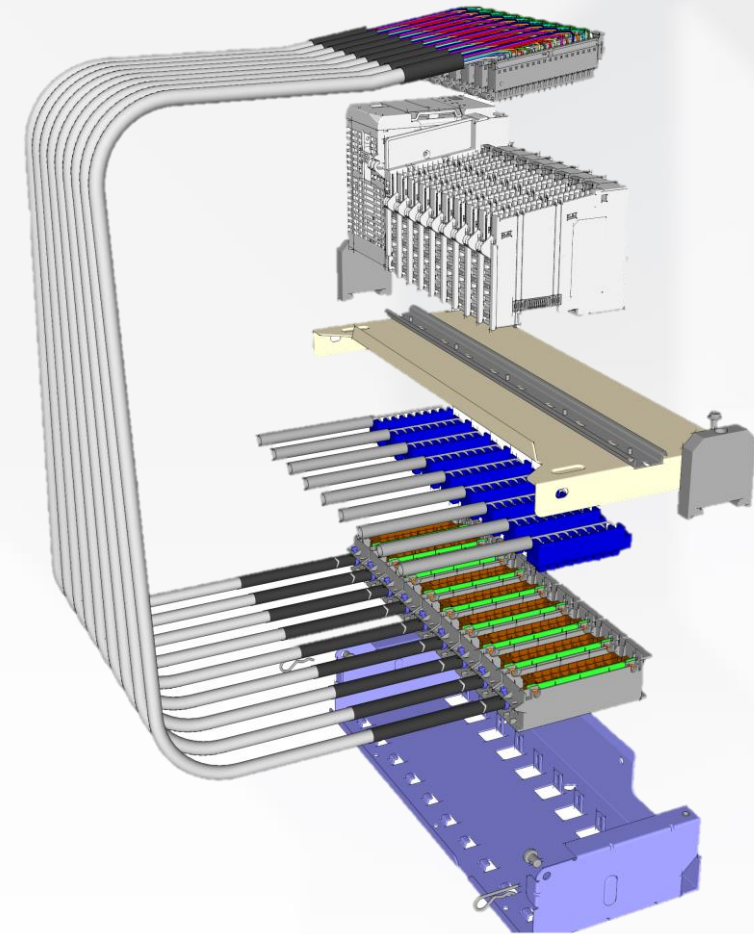
Modernization





# Modernization Tools – I/O Conversion

- Available for:
  - PLC 5 to ControlLogix
  - SLC to CompactLogix
  - Third Party to ControlLogix



1492 I/O conversion  
modules:  
Compact 5000™ I/O  
interface

CompactLogix™ 5380  
controller  
Compact 5000™ I/O  
modules

Upper mounting plate

Existing SLC™ I/O  
(Bulletin 1746)  
field wiring

1492 I/O conversion  
modules: SLC™ I/O  
(Bulletin 1746)  
interface

Lower mounting plate

Typically saves 10 hours per rack of ten, 40-point I/O modules

# Modernization Tools – I/O Conversion

- Available for:
  - PLC 5 to ControlLogix
  - SLC to CompactLogix
  - Third Party to ControlLogix

PLC-5 to ControlLogix Solution



Typically saves 10 hours per rack of ten, 40-point I/O modules

# SLC™ 500 to CompactLogix™ – Retain I/O

## Compact 5000™ I/O serial module, catalog 5069-SERIAL

- 2 channel 9-pin D-sub connector supporting RS232C, RS422 and RS-485 media
  - Generic ASCII, Modbus RTU Master/Slave and Modbus ASCII Master/Slave
- 5069-SERIAL DF1 and DH-485 functionality are compatible to the functionality in SLC™ controllers and CompactLogix™ 1769-L23E, 1769-L31, 1769-L32E, 1769-L35E, 1768-L43 and 1768-L45 controllers



## SLC™ Ethernet adapter, catalog 1747-AENTR

Enable SLC™ I/O rack to be controlled by Logix controllers

- Must be in the first slot of an SLC™ I/O rack
- Requires RSLogix 5000® or Studio 5000 Logix Designer® application, version 20 or later
- Supports Ethernet Device Level Ring (DLR)



# Controller Family & Design Software Mapping

Family		Design Software
ControlLogix	V21 or newer	Studio 5000 Logix Designer
	V20 or earlier	RSLogix5000
CompactLogix	V21 or newer	Studio 5000 Logix Designer
	V20 or earlier	RSLogix5000
MicroLogix		RSLogix 500
Micro 800		CCW
PLC-5		RSLogix 5
SLC		RSLogix 500



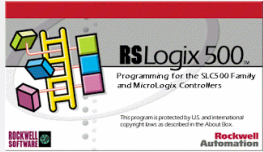
# Modernization Tools – Code Conversion



MicroLogix™



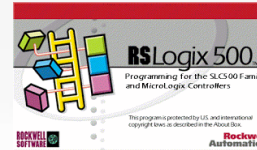
Micro800™



- All MicroLogix™ controllers can be converted to Micro800™ controllers
- Conversion includes latest enhancements and instructions



SLC™



CompactLogix™ 5380



- Convert 80-100% of code automatically

[RSView32 Migration](#)

# Modern HMI/EOI Hardware

## ASEM Industrial Computers & Monitors

- Open architecture
- FactoryTalk View SE or ME



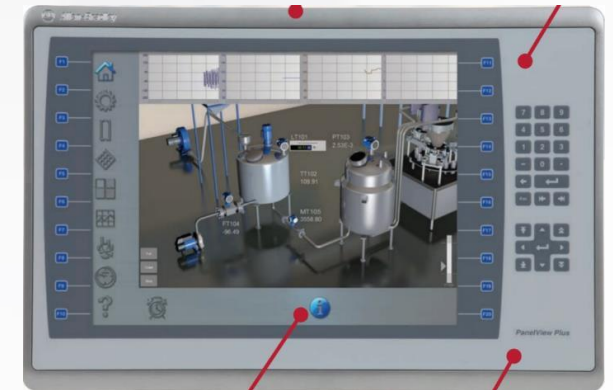
## PanelView 5000

- Studio 5000 View Designer
- Enhanced Logix Integration



## PanelView Plus

- FactoryTalk View ME
- 3<sup>rd</sup> party controller support
- Remote access



- [FT View Software](#)
- [HMI Offerings](#)

# HMI Modernization Tools

Most tools installed with FactoryTalk View Studio

## Legacy Tag Database Conversion Utility

Converts RSView32 tag database to new format (SQL) for 64-bit OS

## Alarm Modernization Tool

Converts RSView32 HMI alarms to FactoryTalk alarms

## Tag Import/Export Wizard

Used to export HMI tag information to .CSV file for quick editing

## HMI Tag to Direct Reference Converter

Converts HMI tag database references to direct controller tag references

# Software & Integration



- FT Analytics
- FT DataView
- FT Metrics
- FT Historian
- FT AssetCentre
- Communication Gateways
  - Emulation Solutions
  - MOM & MES Systems

Software Offerings

# Beyond PLCs...



Motion  
Control



Networks &  
Security



Visualization  
Solutions



Data &  
Analytics



Smart  
Devices

# Rockwell Support

- Self Serve Support:
  - Knowledge Base
  - Literature Library
  - TechConnect
- Services:
  - Field Service Engineering
  - Cybersecurity, Networking, Motion, Migration, Information Software Consulting Services
- Local Support:
  - Account Manager
  - Technology & Solutions Consultants
  - Trusted System Integrators

Find local support at:

[locator.rockwellautomation.com/Distributor](https://locator.rockwellautomation.com/Distributor)  
[locator.rockwellautomation.com/SalesOffice](https://locator.rockwellautomation.com/SalesOffice)