

9480 Carroll Park Dr., San Diego, CA 92121-5201
 Phone (858) 657-9800 Fax: (858) 657-9818 Toll Free 1800 324-5190
 E-mail: sda_techsupport@teledyne.com Website: <http://www.teledyne-api.com>

16-007

28 APRIL, 2016

T265 CONFIGURATION CHANGE

I. PURPOSE:

The T265 has had a configuration change. "Superthane" tubing is used everywhere inside of the analyzer instead of Tygon. The Tygon makes a yellow precipitates that may look like a material that could affect the instrument. Though we have not seen evidence of any compromised performance, it is recommended that the Tygon is changed out for Superthane.

II. PARTS:

The following 11 part numbers and quantities are for 1 analyzer

Item #	Quantity	Part number, description
1	24ft	TU0000038 TUBING, 1/4 OD-1/8 ID, SUPERTHANE, BLACK
2	20ft	TU0000002 TUBING, BLACK FEP 1/8", FU7006005B(KB)
3	1ft	TU0000020 TUBING, SILICON, 1/4 ODx1/8 IDx1/16 *
4	8	HW0000150 CLAMP, HOSE, NYLON, 1/4" K62 "AA" (VMI)
5	22	FT0000371 FERRULE FRONT, SS, 1/4" (KB)
6	22	FT0000372 FERRULE REAR, SS, 1/4" (KB)
7	10	FT0000425 FERRULE, FRONT, SS, 1/8" (SL)
8	10	FT0000426 FERRULE REAR, SS, 1/8" (SL)
9	4	FT0000383 FERRULE FRONT, B, 1/4" (KB)
10	4	FT0000391 FERRULE REAR, B, 1/4" (KB)
11	3ft	TU0000009 TUBING, 1/4 OD-1/8 ID, SUPERTHANE, CLEAR

III. PROCEDURE:

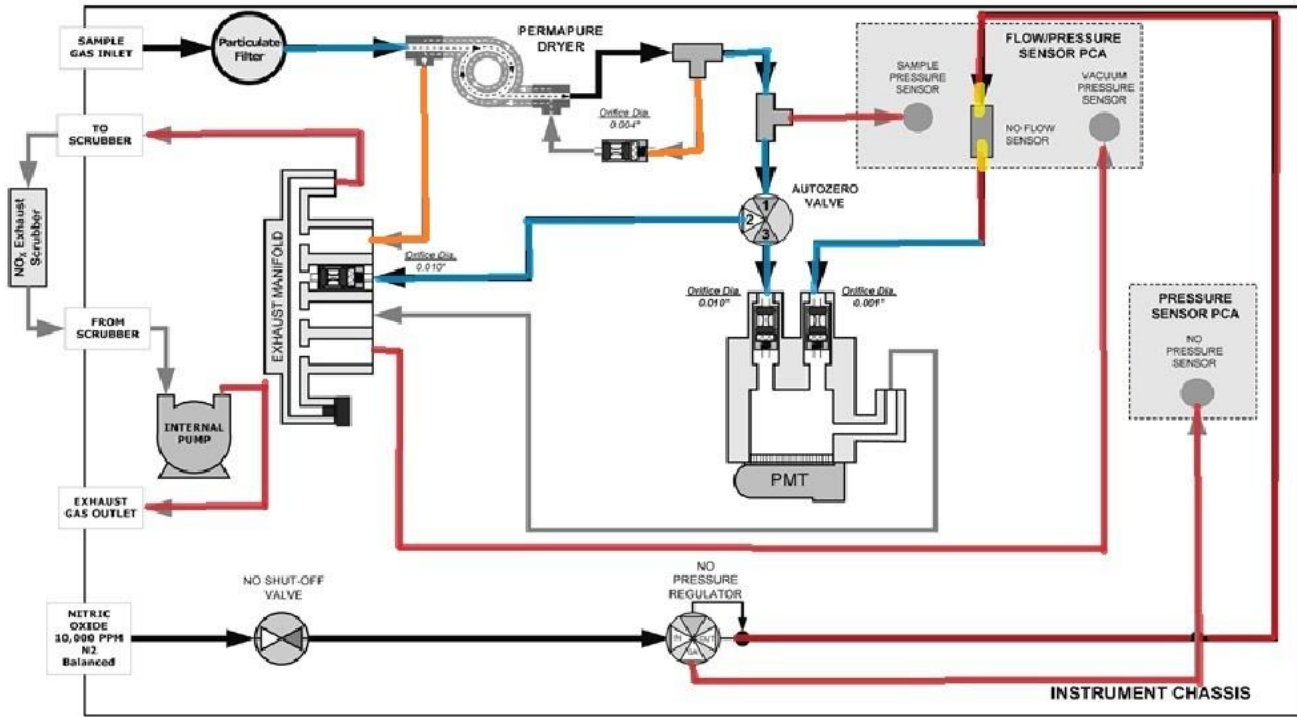
1. Please contact Technical support at SDA_Techsupport@teledyne.com for required parts.
2. All Tubing and associated fittings need to be changed out. Refer to Figure 1 for reference.

T265 CONFIGURATION CHANGE

16-007 Rev. A (DCN 7245) 05/12/2016

Page 1 of 2

PRINTED DOCUMENTS ARE UNCONTROLLED



- TU0000038 Black Supertane
- TU0000002 Black 1/8 inch
- TU0000020 Silicone
- HW0000150 Clamp
- TU0000009 Clear Superthane



FIGURE 1

T265 CONFIGURATION CHANGE
 16-007 Rev. A (DCN 7245) 05/12/2016
 Page 2 of 2
 PRINTED DOCUMENTS ARE UNCONTROLLED