

9480 Carroll Park Dr., San Diego, CA 92121-5201
 Phone (858) 657-9800 Fax: (858) 657-9818 Toll Free 1800 324-5190
 E-mail: sda_techsupport@teledyne.com Website: <http://www.teledyne-api.com>

16-003
15 FEB, 2016

NUMAVIEW REMOTE

I. PURPOSE:

Instructions on how to use NumaView Remote

II. TOOLS:

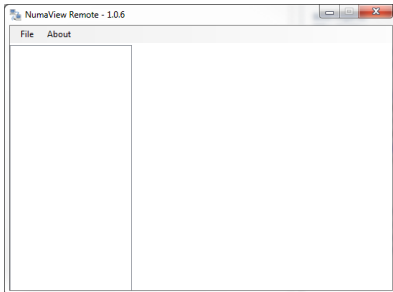
NumaView Remote Software
 Firmware 1.1.0 or higher

III. PARTS:

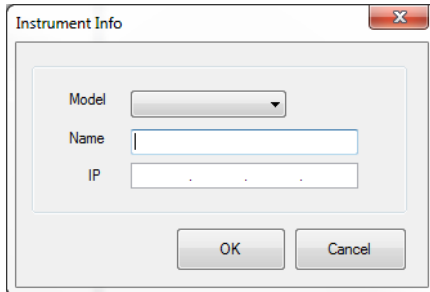
Computer with Internet Capabilities and Instrument with NumaView firmware and Ethernet set up

IV. PROCEDURE:

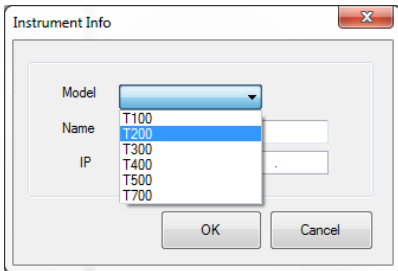
1. Open NumaView Remote



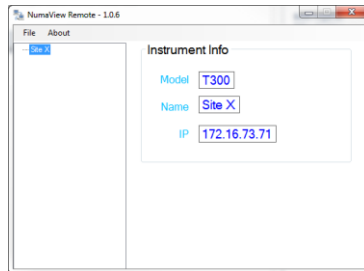
2. Click File then New Instrument



3. From dropdown select Model



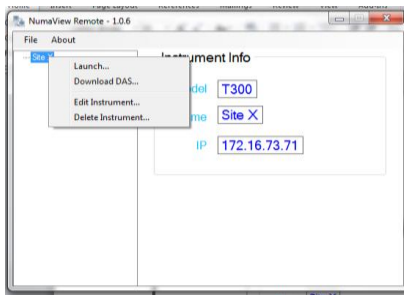
4. Enter a Name you want to call the instrument
 Type in IP Address of the instrument and click OK



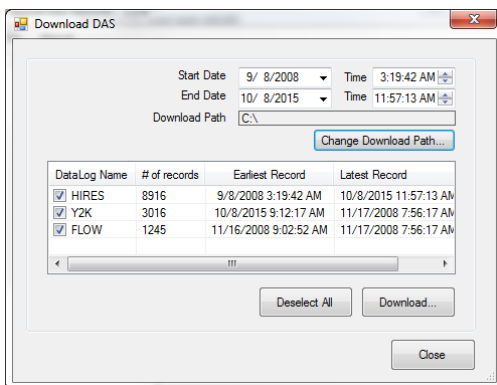
NumaView Remote
 NOTE16-003 Rev __A__ (DCN 7198) Approval date here
 Page 1 of 2

PRINTED DOCUMENTS ARE UNCONTROLLED

5. Right click on the “Name” you given the instrument and Click Launch.



6. You can also download The DAS files by right clicking on the “Name” and click Download DAS. It will give you another screen. You can set download path, select start, end dates of the files you want and it will show you what DAS files are on the instrument click download and click close.



7. NumaView Firmware will allow multiple computers to be connected to the instrument at the same time while the operator is pressing buttons on the instrument. NumaView Remote will also allow Multiple windows to be opened so you can monitor more than one unit at the same time.

*****This NumaView Remote will only work with Ethernet*****