



04-017B
2 May, 2007

RELAY BOARD RETROFIT (M400E)

I. PURPOSE:

To give instructions on How to install the relay board retrofit kit in an M400E analyzer.

II. TOOLS:

Diagonal Cutters
Phillips head screwdriver

III. PARTS:

KIT000209



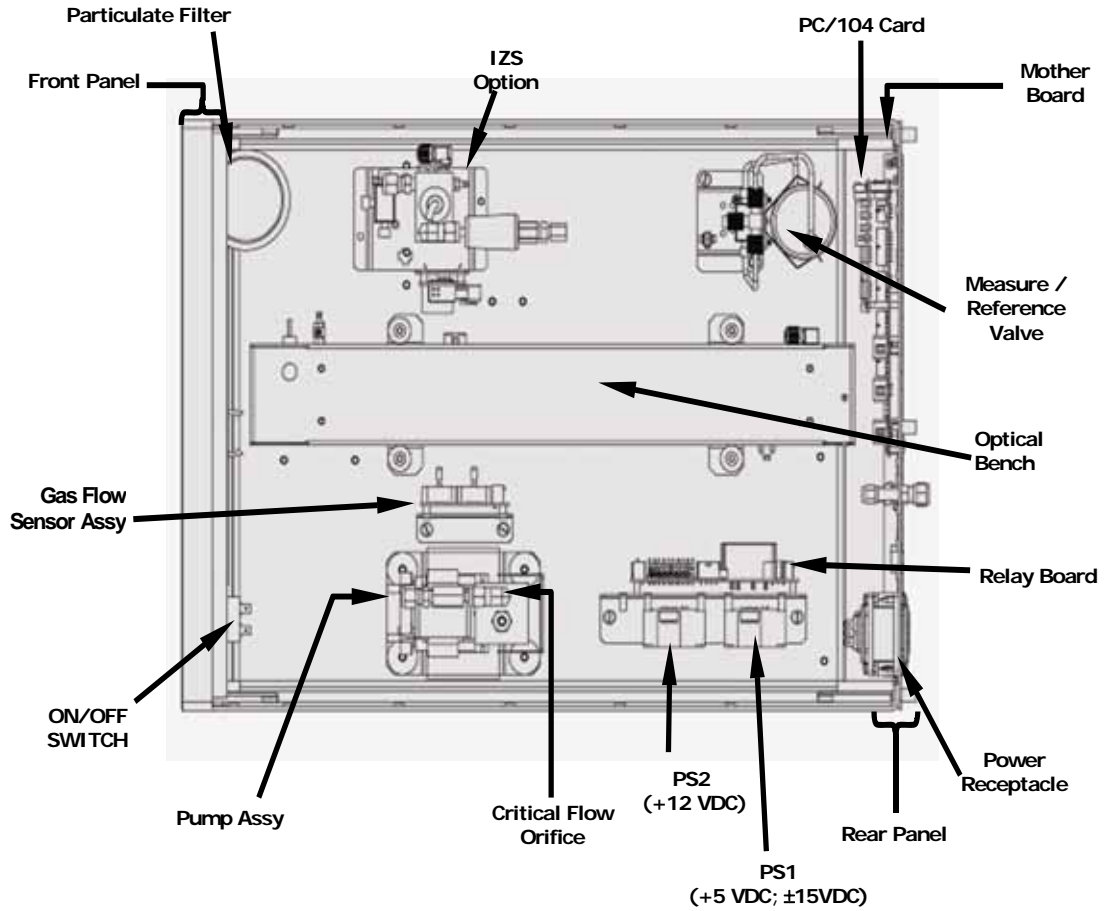
The electronics used in T-API analyzers are sensitive to Electrostatic Discharge (ESD). When working on any T-API device, please ensure that you are properly grounded prior to handling or touching any electronic circuitry in the analyzers! For more information on how to protect sensitive components from ESD during handling, please contact T-API customer service and ask for the ESD Service note number 03-022A.

IV. PROCEDURE:

1. Power down the instrument and remove the power plug from the instrument.
2. Remove the top cover from the instrument
3. Locate the relay board in Figure 1



FIGURE 1
M400E LAYOUT



RELAY BOARD RETROFIT (M400E ANALYZER)

04-017 Rev B

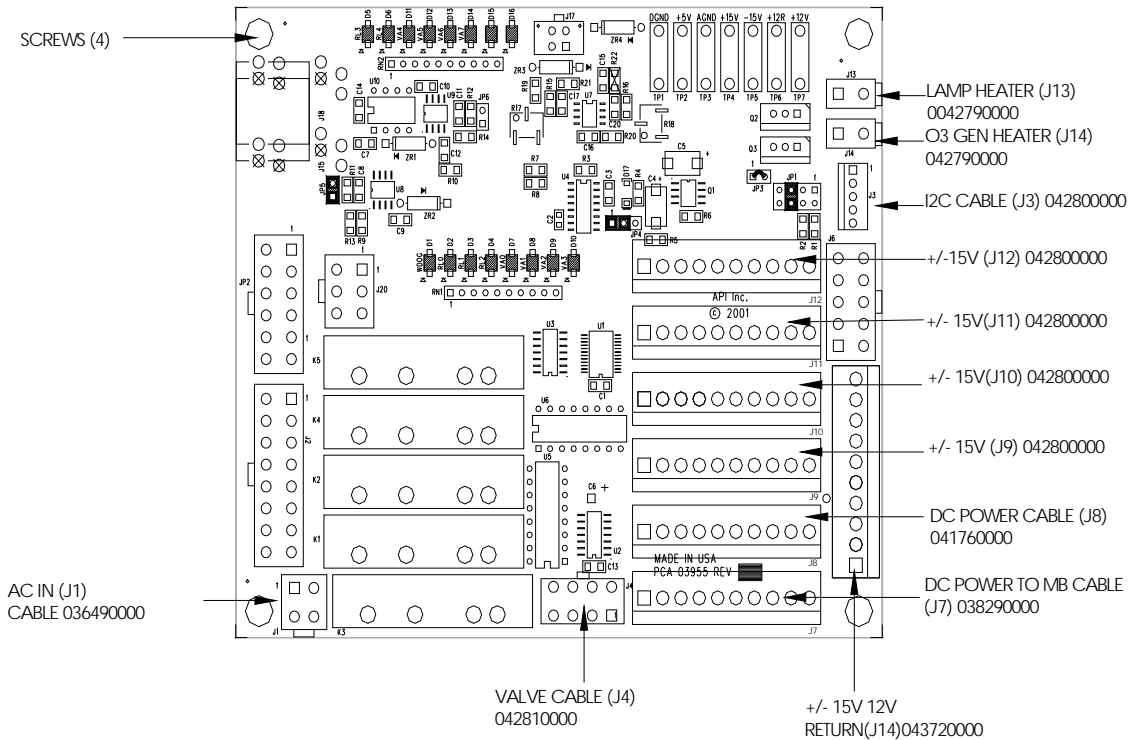
Page 2 of 4



Removing the old Relay Board.

1. Remove each of the cables attached to the relay board.
2. Remove the (4) screws that hold the relay board to the mounting bracket.
3. Take the relay board and put it into an anti-static bag.

FIGURE 2
OLD RELAY BOARD (039550100)



RELAY BOARD RETROFIT (M400E ANALYZER)

04-017 Rev B

Page 3 of 4



TELEDYNE INSTRUMENTS

Advanced Pollution Instrumentation

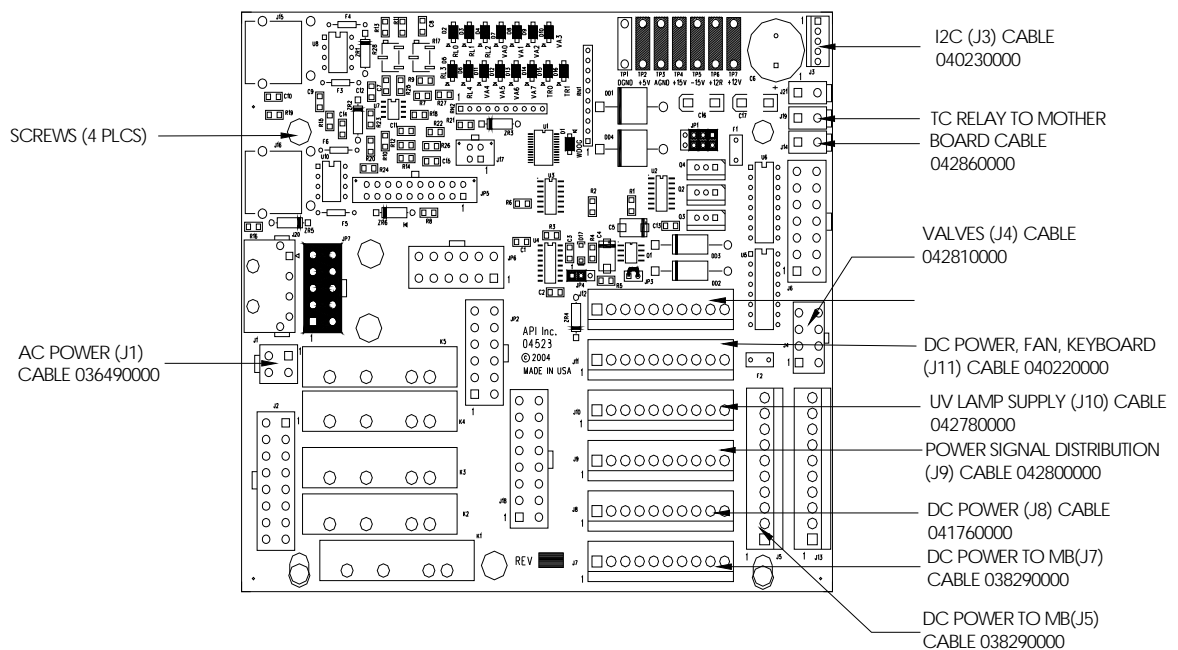
A Teledyne Technologies Company

Installation of the new relay board.

1. Position the new relay board as shown in Figure 3.
2. Tighten the 4 screws to fasten the relay board to the bracket.
3. Reconnect all of the cable assemblies.
4. All of the connectors for each cable should be labeled (i.e. The cable with P5 on the connector connects to J5 on the relay board)
5. Turn on the instrument and ensure that all the voltages are present on the relay board test points.
6. If the instrument has valves turn on each valve in the signal I/O and ensure that they are working.
7. Give the instrument at least an hour to warm up.
8. Verify that all temperatures are correct
9. The instrument is ready for normal operation.

If you experience problems with this retrofit or have any questions regarding this service note please contact API CUSTOMER SERVICE at api-customerservice@teledyne.com or call 800-324-5190.

FIGURE 3
NEW RELAY BOARD 045230100



RELAY BOARD RETROFIT (M400E ANALYZER)

04-017 Rev B

Page 4 of 4