



**01-035C
2 May, 2007**

INSTALLATION OF SAMPLE DRYER TO M300 ANALYZERS

I. PURPOSE:

This note gives instructions on retrofitting a permeation dryer into the Teledyne API M300 CO analyzer.

II. TOOLS:

#2 Phillips Head Screwdriver
9/16" wrench
7/16" wrench

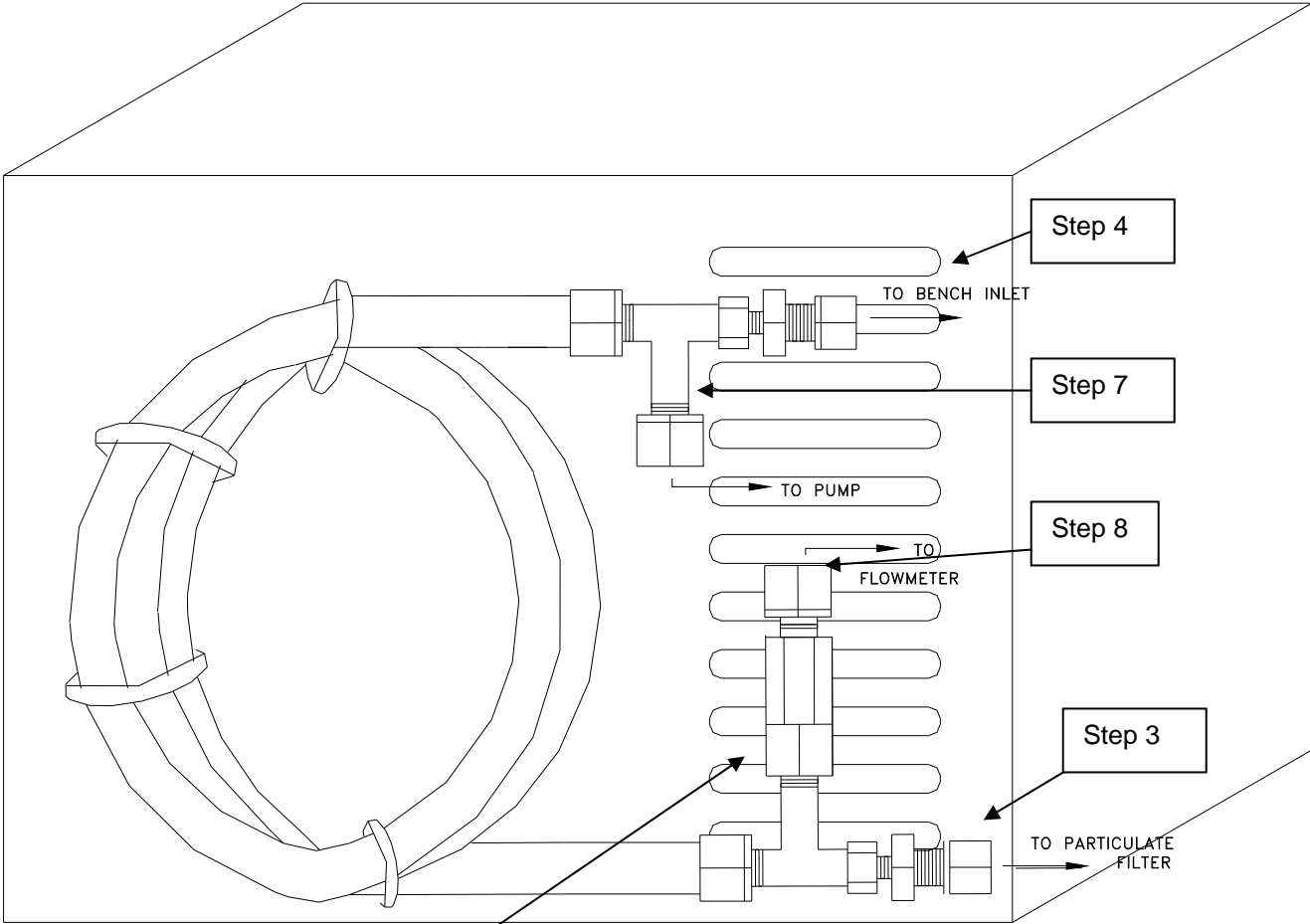
III. PARTS:

Teledyne API PN# KIT152

IV. PROCEDURE:

1. Remove the power cable and cover from the analyzer.
2. Locate the particulate filter housing on the front panel of the analyzer. There are two tubes connecting to it. One (short) tube goes to the bench (black); the other, (clear), goes to the rear panel (if you have IZS valves, this second tube will go to a valve). Remove the tube going from the filter housing to the bench, (black).
3. Locate the tube connected to the end of the permeation dryer, (Drawing #1). Connect this tube to the Sample Filter Housing (where you removed the small tube in step 3).
4. Locate the tube connected to the other end of the tee on the permeation dryer, (Drawing #1). Connect this tube to the bench inlet.
5. Locate the Tygon tube connecting the Flowmeter to the orifice housing on the pump. Disconnect this tube and set it aside.
6. Remove the Orifice Housing from the Pump, (Drawing #2) and attach it to the side fitting on the Dryer (Drawing #1).
7. Locate the Tygon tube connected to the permeation dryer (Drawing #1) and connect it to the Flowmeter (Drawing #2).
8. Take the tube you removed in step #5 and connect it from the open port of the pump to the Orifice Housing (installed on the dryer in step #6).
9. Replace the cover on the analyzer.
10. Power the analyzer on and wait 30 minutes for stabilization prior to performing zero and span calibrations.

DRAWING #1



Step #6. Orifice from pump is shown attached to side fitting of dryer.

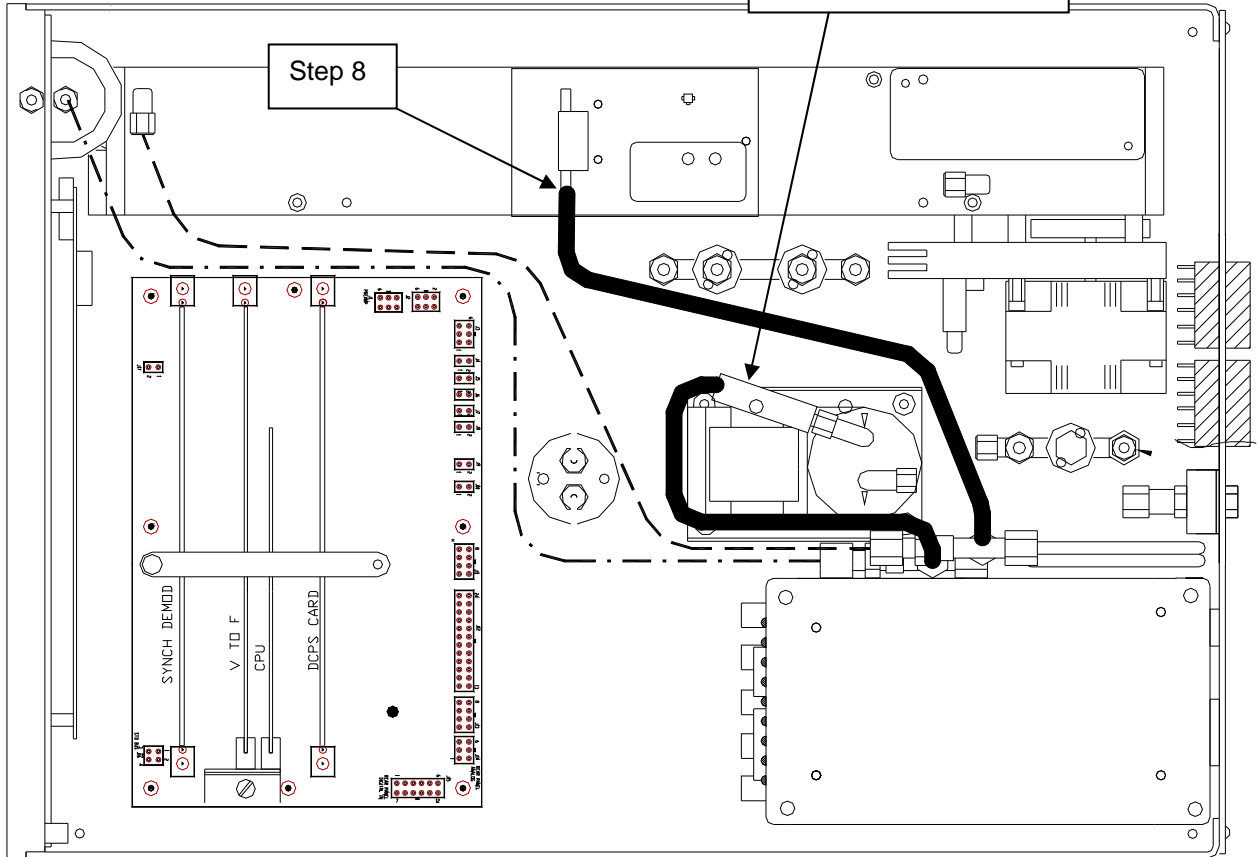
TOLERANCES		API ADVANCED POLLUTION INSTRUMENTATION INC.			
X ±	XXX ±			S	
XX ±					
The information hereon is the property of API and is submitted in strictest confidence for reference only. Unauthorized use by anyone for any other purposes is prohibited. This document or any information contained in it may not be duplicated without proper authorization.		APPROVALS	DATE	RETROFIT, DRYER ON S	
		DRAWN		M300	
		CHECKED			
		APPROVED		SIZE	DRAWING NO. KIT000152
		DO NOT SCALE DRAWING		SCALE	

DRAWING #2

Remove per step #6.

Step 8

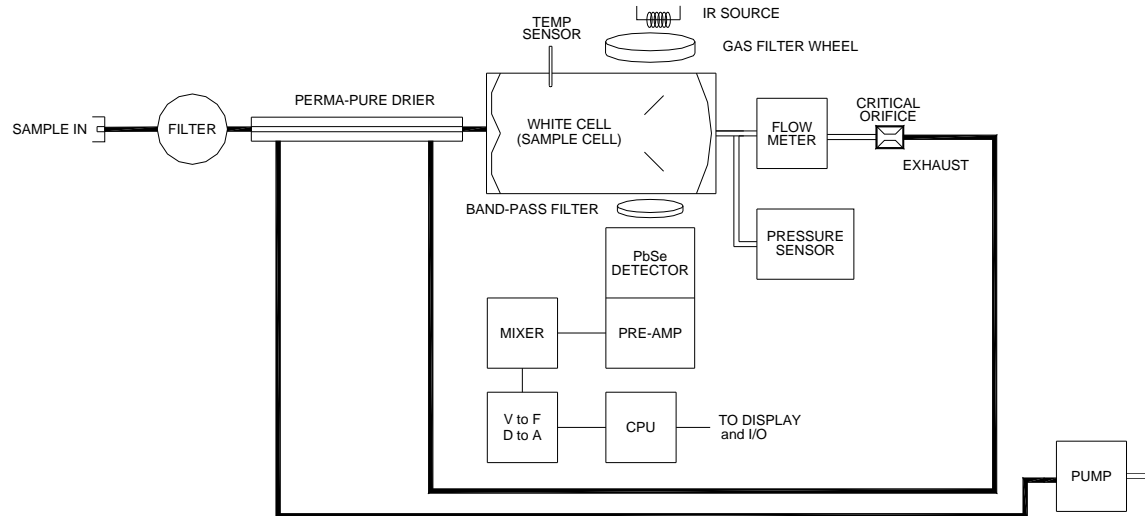
- 1/4" TYGON
- - 1/8" TFE BLK
- 1/8" TFE CLR



PermaPure Drier Retrofit Diagram

1/4/02		A: INITIAL RELEASE	
DATE	ECR#	DESCRIPTION OF CHANGE	
API ADVANCED POLLUTION INSTRUMENTATION INC. SAN DIEGO, CA.		APPROVALS	DATE
		RETROFIT, DRYER ON SAMPLE INL M300	
TOLERANCES X± XXX± XX± The information herein is the property of API and is submitted in strictest confidence for reference only. Unauthorized use by anyone for any other purposes is prohibited. This document or any information contained in it may not be duplicated without proper authorization.		DRAWN	
		CHECKED	
DO NOT SCALE DRAWING		SIZE	DRAWING NO. KIT000152 REVISION /
		SCALE	SHEET 1 of

M300 Analyzer with Sample Drier



Installation of Sample Dryer to M300 Analyzers

01-035 Rev C

Page 4 of 4