



REDUCE NOISE ON THE EXTERNAL THOMAS PUMP

I. SCOPE:

To reduce the noise on the Thomas (model 607) Pump.

II. PARTS:

Kit # 69 containing one -10" length of 1/4" plastic tubing and one- tube connection fitting 1/4 tube to Y2" pipe.

III. TOOLS:

2 small adjustable wrench.
Tubing cutter or knife.

IV PROCEDURE

1. Remove silencer from pump outlet.
2. Rap 1/2" pipe thread on tube connection fitting with Teflon tape then install to outlet of pump.
3. Place tube 1/4" tube nut and front and rear ferrule on 10" length of plastic tubing and attach to tube fitting on pump (see page 2).

If you have questions regarding this procedure or any API equipment, please contact an API Customer Service representative:

Phone: (619) 657-9800
Email: customerservice@advpol.com

Fax: (619) 657-9816
WWW: <http://www.advpol.com>

NOTES:

1. SAMPLE INLET LINE 3 METERS MAXIMUM LENGTH
2. TUBING MATERIAL 1/4" PTFE
3. OTHER WETTED MATERIALS SHOULD BE PTFE, GLASS, STAINLESS ONLY
4. MUST BE EXCESS FLOW IN SAMPLE MANIFOLD
5. SAMPLE, CAL GAS, OR ZERO GAS INLET LINES AT ATMOSPHERIC PRESSURE.

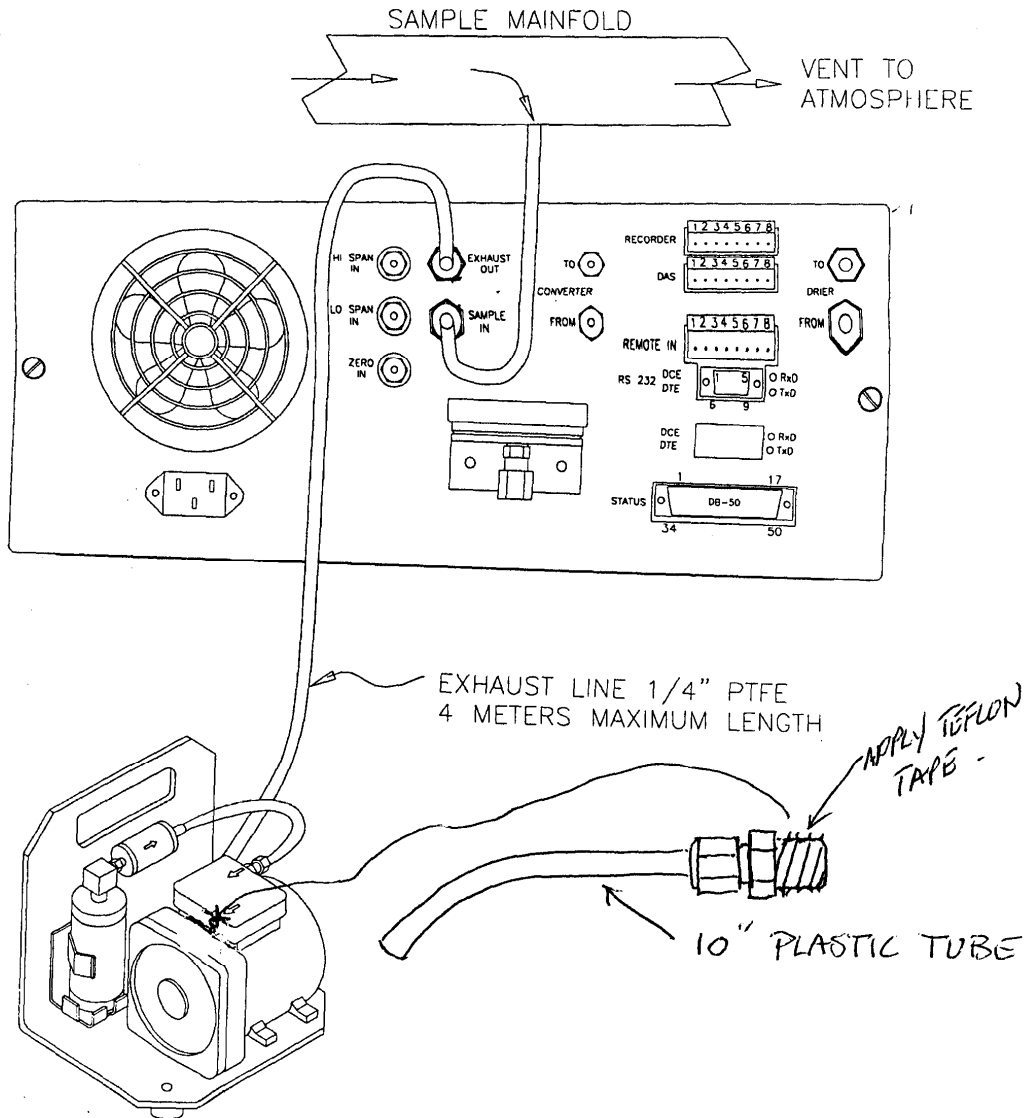


FIGURE 2.3
GAS INLET AND EXHAUST VENTING

API Model 200AH NOx Analyzer Operator Manual – Page 14

REDUCE NOISE ON THE EXTERNAL THOMAS PUMP

Service Note-99-023

Page 2 of 2