



**PMT LEAK CHECK PROCEDURE**

**I. SCOPE:**

Specifications for leak checking PMT housing on M200A analyzers.

**II. PARTS:**

None

**III. TOOLS:**

1 Small adjustable wrench.  
Air supply or small pump.  
0 to 30 In. W. C. pressure gauge  
Small adjustable pressure regulator.  
¼" shutoff valve.  
¼" plastic tubing, about 16" long.  
Tubing cutter or knife.  
Medium Phillips head screw driver.

**IV. PROCEDURE:**

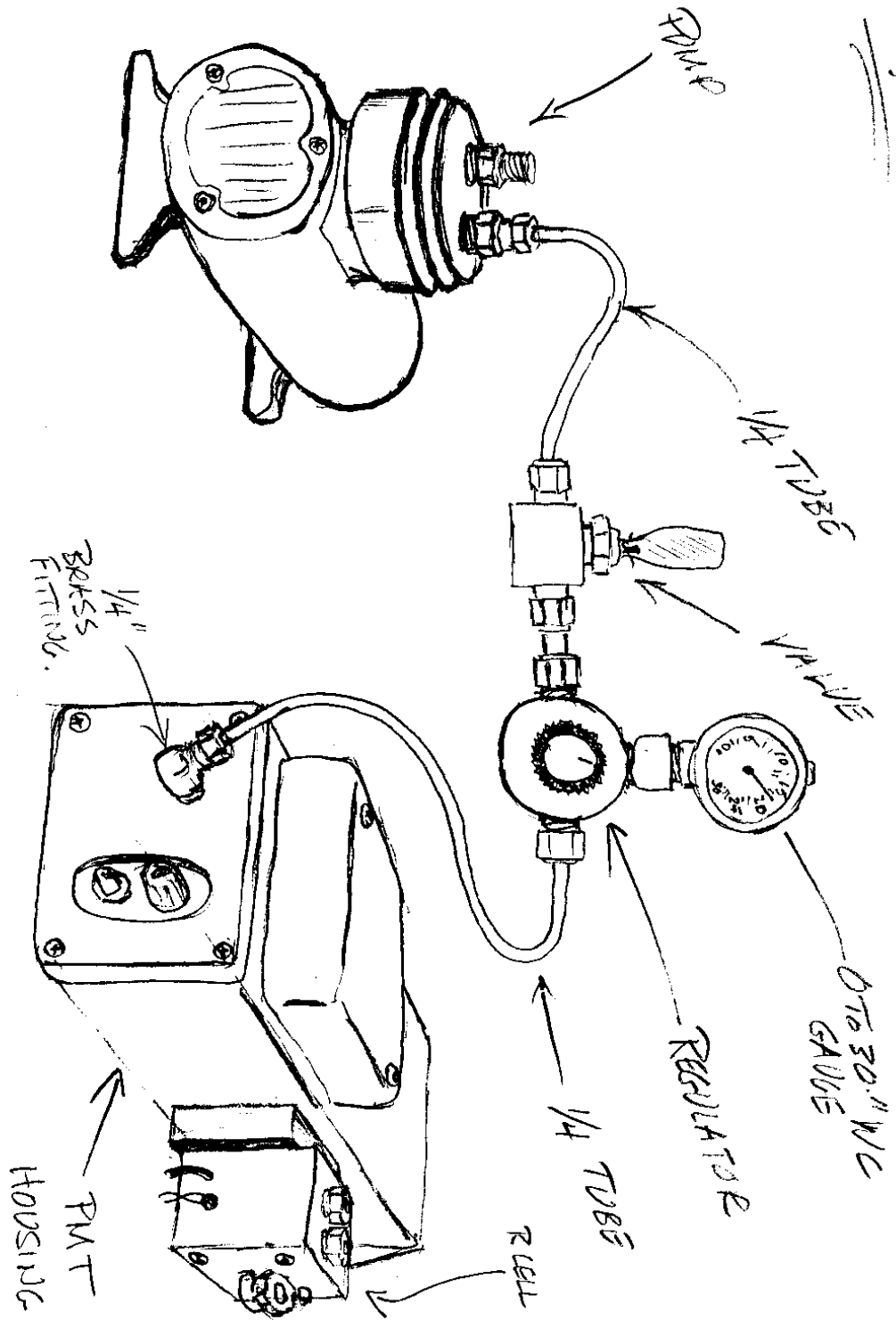
1. Remove 1/8" brass fitting cap, located on end plate or top of body of PMT housing.
2. Attach regulator, valve, and pressure gauge, to pump using ¼" tubing. Then attach this to brass fitting on PMT housing using more ¼" tubing. See enclosed drawing.
3. Pressurize PMT housing to 28" W.C. (**CAUTION DO NOT EXCEED 30" W.C.**) then close valve. Leakage not to exceed 2.8" W.C. in 5 minutes.
4. If leakage is within spec. remove test equipment and replace brass 1/8" cap to brass fitting on PMT housing.
5. If leakage isn't within spec. open valve to air supply to pressurize PMT housing. Apply bubble solution to all areas on PMT where leakage can occur. Tighten attachments to PMT housing where bubbles occur. In some cases "O" rings might have to be replaced.
6. After repairs and leakage is within spec. remove all bubble solution from the PMT housing, remove leak check equipment and recap 1/8" brass fitting on PMT housing.

If you have questions regarding this procedure, have any suggestions that might make this procedure easier to accomplish or make this service note easier to use, please contact, API Customer Service representative at:

Phone: (619) 657-9800 / Fax:(619) 657-9816

Email: [customerservice@advpol.com](mailto:customerservice@advpol.com)

LEAK CHECK EQUIPMENT



VER  
98

"PMT LEAK CHECK PROCEDURE"  
Service Note 98-055  
Page 2 of 2