



CHANGING MOLY CARTRIDGE IN WELDED MOLYS

I. SCOPE:

This document is the procedure for changing the moly cartridge in the welded moly.

II. TOOLS:

#2 Phillips Head Screwdriver
9/16" wrench
7/16" wrench
Flat Blade Screwdriver

III. PROCEDURE:

Please refer to the attached drawing # 02284 for this procedure.

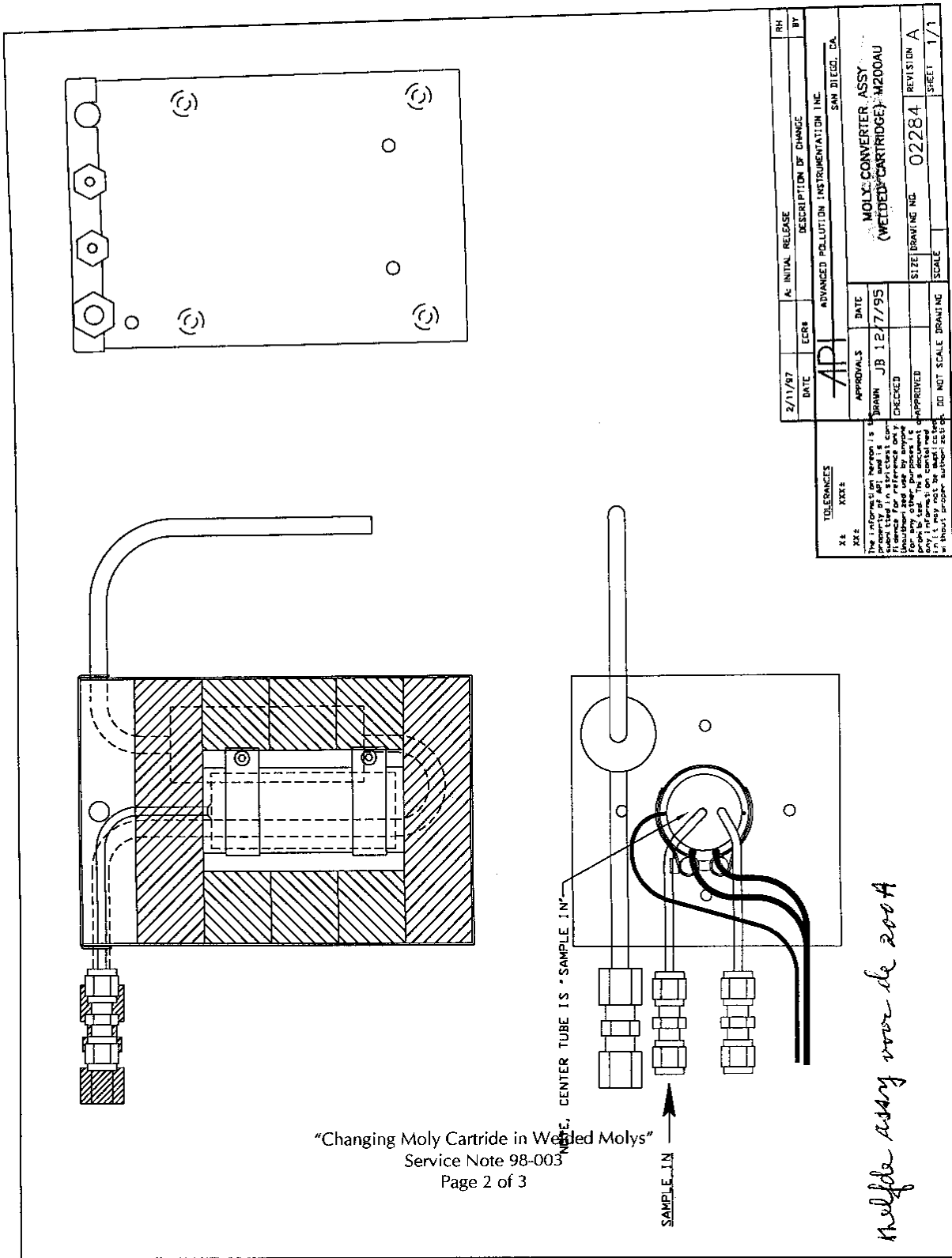
WARNING!

The moly runs at 315°C! The case may be HOT! Even if the case is not hot, the inside may still be EXTREMELY hot! Be sure to let the moly cool for a few hours after power is removed before proceeding!

1. Remove power and cover from the analyzer.
2. Remove the tubes from the following places:
 - A. 1/8" tube on left side of tee at top of left valve.
 - B. 1/8" tube from bottom right fitting of right valve.
 - C. 1/8" tube from top of right valve.
 - D. ¼" tube from tee between valves.
3. Disconnect 2 connectors from the base of the moly in front of the valve.
4. Disconnect the thermocouple wire from the status/temp card. Follow the wire to the moly and verify it is not tangled or tie wrapped.
5. Loosen the 4 captive screws on the moly housing. Lift the moly out of the chassis and place on a bench.
6. Remove the cover from the moly. This may require removal of screws in the cover.
7. Remove the insulation from on top of the cartridge. Remove the cartridge, heater and thermocouple assembly from the case.
8. Remove the heater assembly from the weldment by loosening the 2 flat blade screws and sliding the weldment out.
9. Insert the new weldment into the heater assembly and tighten the screws.

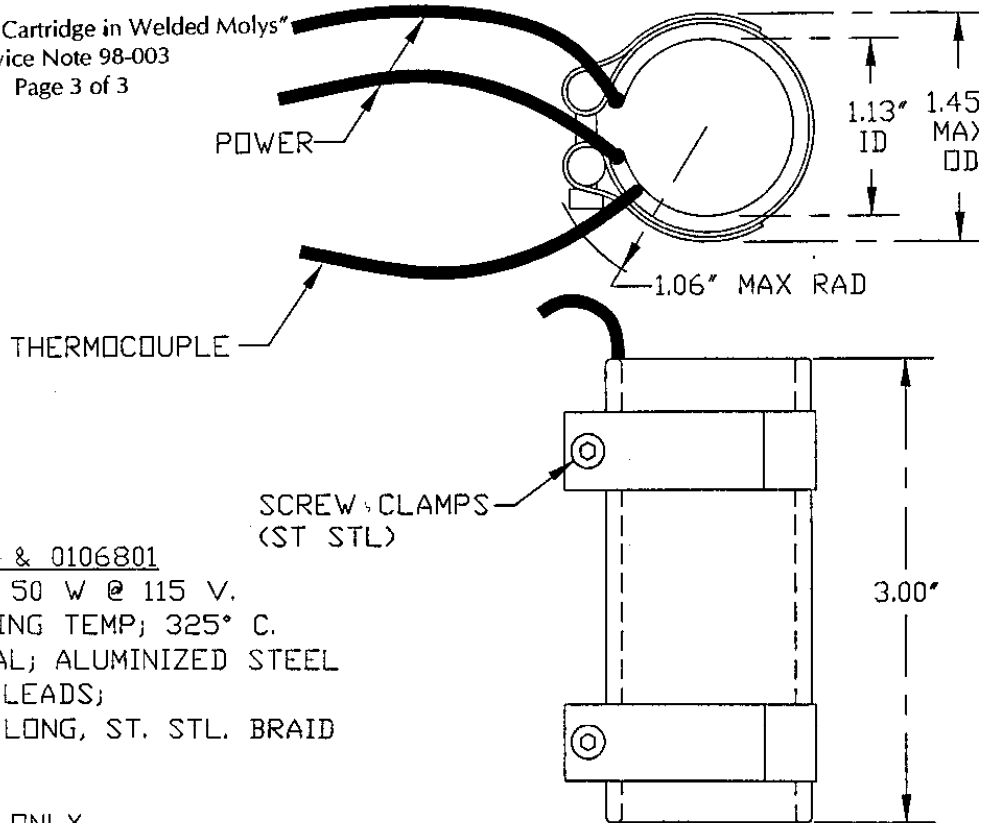
10. Installation is the reverse of removal.

If you have any questions or comments regarding API equipment, please contact a



Customer Service representative.

"Changing Moly Cartridge in Welded Molys"
 Service Note 98-003
 Page 3 of 3



0106800 & 0106801
 POWER; 50 W @ 115 V.
 OPERATING TEMP; 325° C.
 MATERIAL; ALUMINIZED STEEL
 POWER LEADS;
 12" LONG, ST. STL. BRAID

0106801 ONLY
 THERMOCOUPLE;
 INTEGRAL, TYPE J, 12" LONG.

8/20/96
 1/26/94

XC; ADDED 0106801, REDRAWN
 REVISED TO VENDOR REQUEST

7/15/93		WAS CALLED "TUBULAR HEATER"
DATE	ECR#	DESCRIPTION OF CHANGE

TOLERANCES
 X± XXX±
 XX± .03

The information hereon is the property of API and is submitted in strictest confidence for reference only. Unauthorized use by anyone for any other purposes is prohibited. This document or any information contained in it may not be duplicated without proper authorization.

API		ADVANCED POLLUTION INSTRUMENTATION INC.		SAN DIEGO, CA	
APPROVALS		DATE	HEATER, BAND		
DRAWN	JB	7/9/93			
CHECKED					
APPROVED					
DO NOT SCALE DRAWING		SCALE	SIZE	DRAWING NO. 01068	REVISION
					SHEET