



TROUBLESHOOTING ELECTRICAL NOISE PROBLEMS IN M400 ANALYZER

I. SCOPE:

If you are having problems with noise, we recommend the following procedure to determine whether the noise is coming from the optical bench or is electrical noise in the V/F card or CPU assy.

II. PARTS:

012110000 constant volt source plug (4.5 Vdc)

III. TOOLS:

Strip chart recorder hooked to the output of the analyzer.

IV. PROCEDURE:

- A. Set the analyzer to the 100 PPB range.
- B. Disconnect the cable from J1 on the motherboard.
- C. Install the constant volt source plug into J1.
- D. Record the noise on the strip chart.
- E. If the noise goes away, then you have a problem with the optical bench.
- F. If the noise is the same, or a little bit less, but still exceeds the noise specification for the analyzer, then you have a problem with the V/F card or the CPU assy.

If you have questions regarding this procedure or any Teledyne API equipment, please contact an Teledyne API Customer Service representative at:

Phone: (858) 675-9800

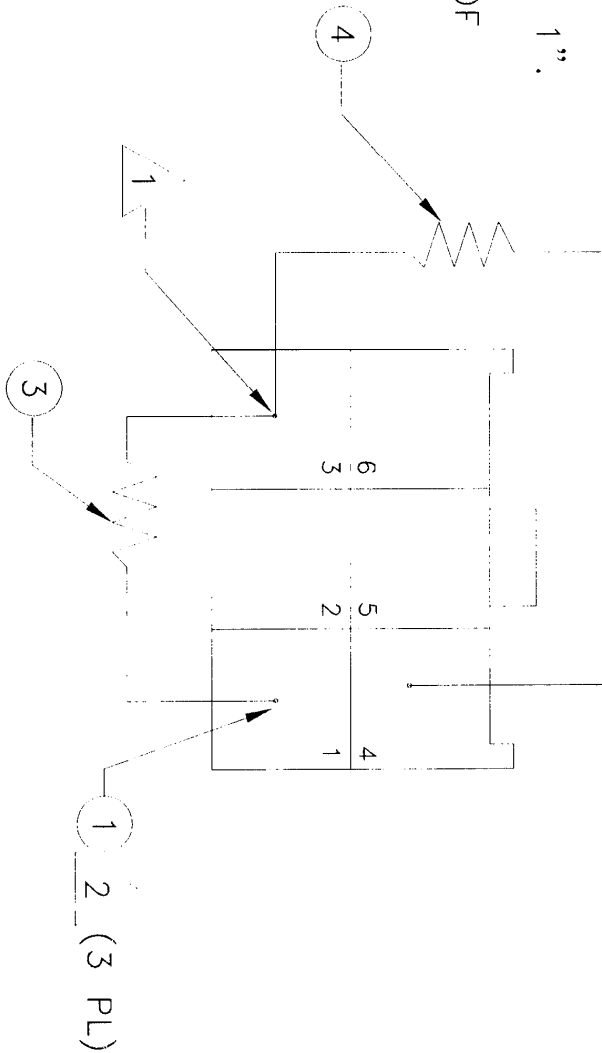
Fax: (858) 657-9816

Email: api-customerservice@teledyne.com

NOTES:

1 TWIST LEADS TIGHTLY TOGETHER FOR 1/2"

2 CUT ALL LEADS TO 1". CRIMP TERMINAL, THEN APPLY DOT OF SOLDER AT CRIMP.



8/11/94 B: REDREW RESISTORS

11/30/93 A: INITIAL RELEASE

DATE ECR# DESCRIPTION OF CHANGE

KL

BB

BY

ADVANCED POLLUTION INSTRUMENTATION INC.

SAN DIEGO, CA

API

APPRO. ALS DATE

DRAWN BYRNE 11/93

CHECKED

APPROVED

DO NOT SCALE DRAWING

O3 CONSTANT 4.5V
SOURCE PLUG

SIZE DRAWING NO. 01211

SCALE REVISION B

SHEET

TOLERANCES

XX ±

The information hereon is the property of API and is submitted in strictest confidence for reference only. Unauthorized use by anyone for any other purposes is prohibited. This document or any information contained in it may not be duplicated without proper authorization.