

# NumaView™ Remote Software User Guide

© 2017 Teledyne API. All rights reserved.

**Please read the applicable user manual prior to operating the instrument.**

## INTRODUCTION

Teledyne API's NumaView™ Remote software enables remote operation and data capture of your Teledyne API instrument through an Ethernet connection with your computer. This guide provides instructions for acquiring the interface software and setting it up to remotely operate one or more instruments from one or more computers. This requires the following:

- instrument connected to the Ethernet
- computer connected to the Ethernet
- instrument's IP address
- NumaView™ Remote software

## ACCESSING THE NUMAVIEW™ REMOTE SOFTWARE

From your computer use a browser to navigate to the Teledyne API website (<http://www.teledyne-api.com>) and download the NumaView™ Remote software application. For assistance, contact Technical Support.

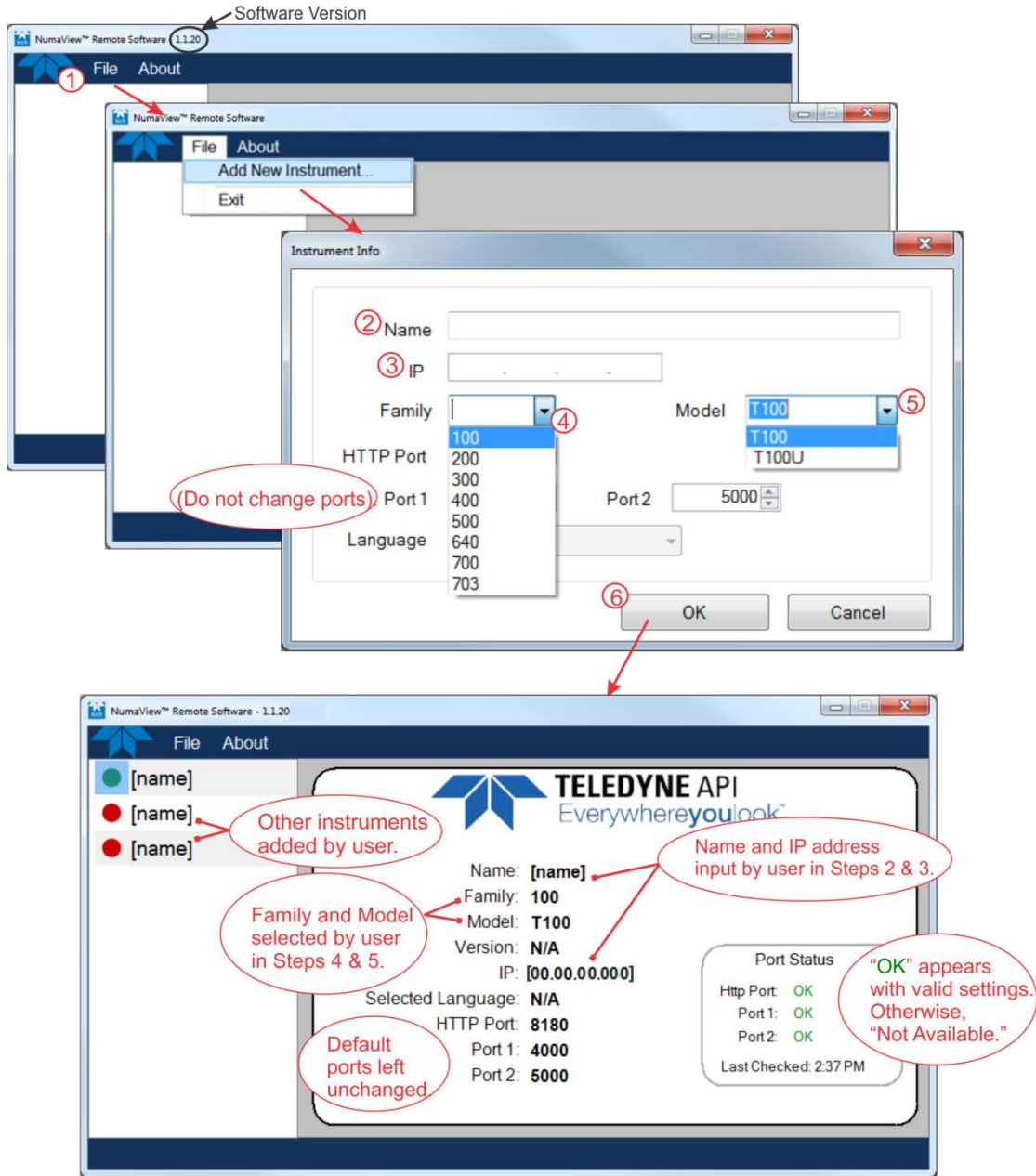
## SETTING UP AN INSTRUMENT FOR REMOTE OPERATION

After fulfilling the requirements listed in the Introduction and downloading the software, start the executable, which will initially bring up a blank screen. (Once an instrument is set up in the NumaView™ Remote software interface, it will remain visible for future use until deleted). Refer to Figure 1.

1. Click File>Add New Instrument.
2. In the Instrument Info window click the Name field and input a name for the instrument (when more than one of the same model will be operated remotely, each must be given a unique name).
3. In the IP field input the instrument's IP address.
4. In the Family dropdown, select the TAPI family number of the instrument to be remotely operated. (This action populates the dropdown menu in the Model field).
5. In the Model dropdown, select the specific instrument model within the family.
6. Click OK.

# NumaView™ Remote Software User Guide

© 2017 Teledyne API. All rights reserved.



**Figure 1. Setting Up Instrument for Remote Operation**

Once the instrument has been added, it can be launched for remote operation (next).

# NumaView™ Remote Software User Guide

© 2017 Teledyne API. All rights reserved.

## STARTING REMOTE OPERATION

Among the instruments listed in the left portion of the window, highlight and right click the instrument to be operated, and click Launch (Figure 2) to bring up the operation interface.

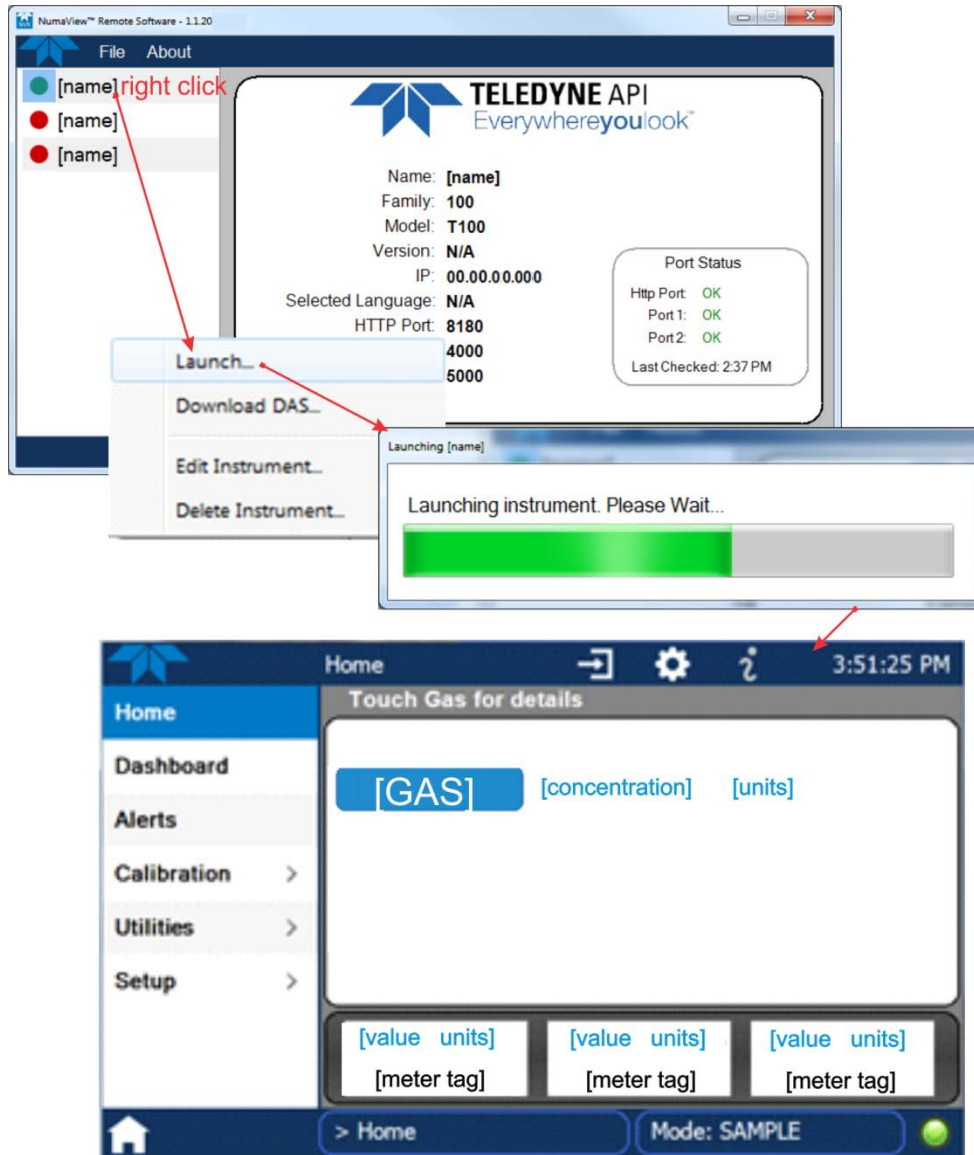


Figure 2. Launching Instrument for Remote Operation

Use a computer mouse to “touch” the virtual NumaView™ software interface for setting up and operating the instrument according to its respective user manual. Use the instrument’s internal data acquisition system (DAS) to collect and analyze data by configuring data logs through the Setup>Data Logging menu.

# NumaView™ Remote Software User Guide

© 2017 Teledyne API. All rights reserved.

## DOWNLOADING DATA LOGS

To remotely download to your computer the data logs captured by the instrument's DAS, right click the instrument name in the NumaView™ Remote software interface and click Download DAS (Figure 3).

1. Provide a period range by selecting a day, month and year from the dropdown calendar in the Start Date and End Date fields (or click within each division (month/day/year) and type the values).
2. Provide a beginning time for the Start Date and an ending time for the End Date by clicking within each division (hour, minutes, and seconds and AM or PM) of the corresponding Time field and either type the numeric value or click the increment/decrement buttons.
3. If the default Download Path needs to be modified, click the Change Download Path button and select a different folder. Otherwise, go to the next step.
4. All data logs are selected by default (checkmark appears in box next to the DataLog Name). Either deselect unwanted logs or click the Deselect All button and select individual data logs intended for download.
5. Click the Download button.

When download is complete, the Success window will display confirmation message showing the location (where three additional subfolders were created: NumaView Remote Datalogs\[Model name]\DL\_[date and time of download]) and the file name ([DataLog name].txt).

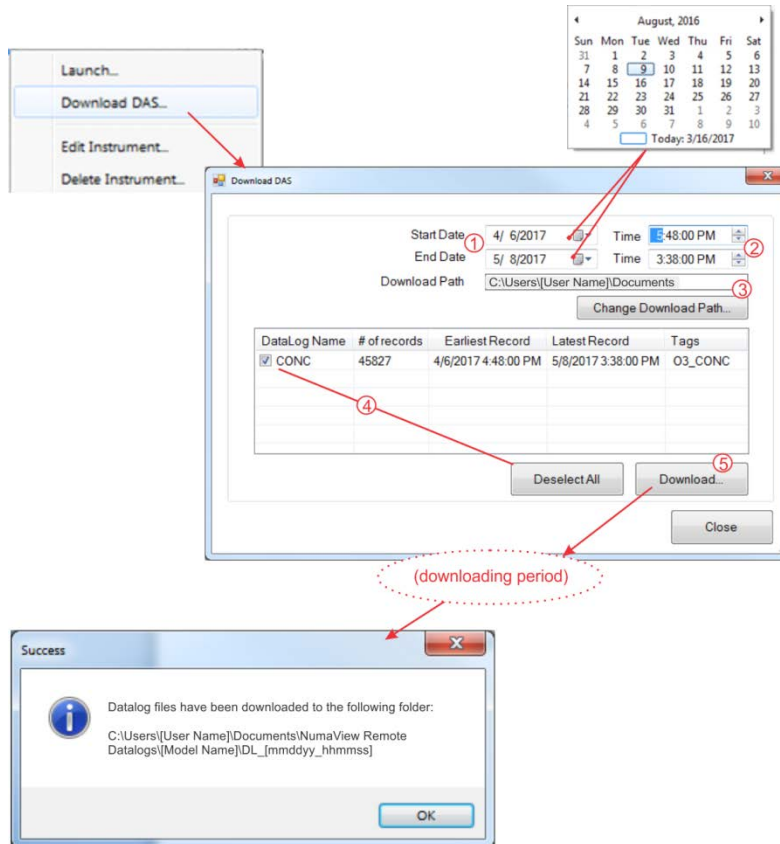


Figure 3. Downloading Data Logs